



Mineral Jig, 9 x 16

CONTACT US

Phone: 310-830-6601

FAX: 310-830-9336

Email: info@sepor.com & services@sepor.com

LOCATIONS

WEST COAST

718 N. Fries Avenue
Wilmington, CA 90744

EAST COAST

3740 NW 124th Ave Coral
Springs, FL 33065

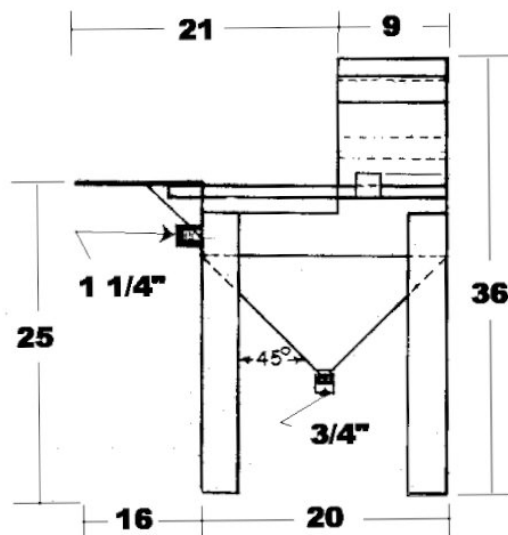


Description:

The Sepor 9x16 mineral jig is a fixed bed design, selective simplex mineral jig for use separating heavy density material from light density material. The 9x16 jig has a screen bed 9" wide by 16" long for a total of 1 square foot of jig bed area. The bed is covered with a stainless steel wedge wire screen with 3 mm openings. The Sepor jig is actuated by 1/2 Hp electric motor which drives an adjustable eccentric fixed shaft connected to a rubber diaphragm. By rotating the eccentric shaft, the stroke may be adjusted, reducing

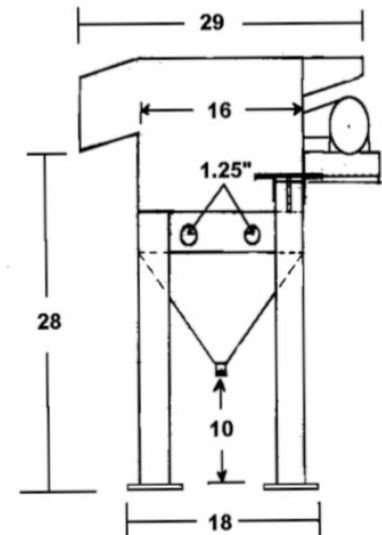
or increasing the action of the diaphragm. A rotating water valve is used to inject water into the diaphragm compartment on the upward stroke and reduce the effect of the suction stroke. A water inlet is provided for adding an additional water column through the bed while jigging. The jig is completely assembled on a sturdy structural steel frame. A 25 pound charge of 3/16" hardened jig shot is included with the jig.

9 X 16 Jig, Front View



All Dimensions are in Inches

9 X 16 Jig, Side View



All Dimensions Are In Inches

Once the water supply is connected and regulated, there is little operator attention required during jig operation.

Applications:

The Sepor 9 X 16 Selective Simplex Mineral Jig has been used in gold, diamond, lead/zinc, and tin recovery operations. In the environmental field, the Sepor 9 X 16 Selective Simplex Mineral Jig has been used in soil remediation projects to remove high density contaminants from the soil. The 9 x 16 jig is suited for laboratory, pilot scale operations or small production operation. The capacity of the 9 x 16 jig ranges from 1/2 to 1 TPH, depending upon the characteristics of the ore/feed material.

Catalog Number	Description	Electrical Requirements	Shipping Weight
050G-016	9 X 16 Jig	115 V/1 Ph/60 Hz	200 lbs.
050G-017	9 X 16 Jig	220 V/1 Ph/50 Hz	200 lbs.