



W.S TYLER® RO-TAP® Sieve Shaker

CONTACT US

Phone: 310-830-6601

FAX: 310-830-9336

Email: info@sepor.com
& services@sepor.com

LOCATIONS

WEST COAST

718 N. Fries Avenue
Wilmington, CA 90744

EAST COAST

3740 NW 124th Ave
Coral Springs, FL 33065

Description:

The Tyler RO-TAP Sieve Shaker is the industry standard. The RO-TAP's unique action produces accurate, and equally important, consistent particle analysis testing results. It is designed to be used in a stationary testing environment and requires very little maintenance. Mechanical action is applied to the testing sieves in two dimensions.



First, a horizontal circular motion and second, a vertical, tapping motion. Combined, these actions allow material particles to stratify and seek critical openings in the screening media. These uniform mechanical movements allow for dependable and reproducible test results.

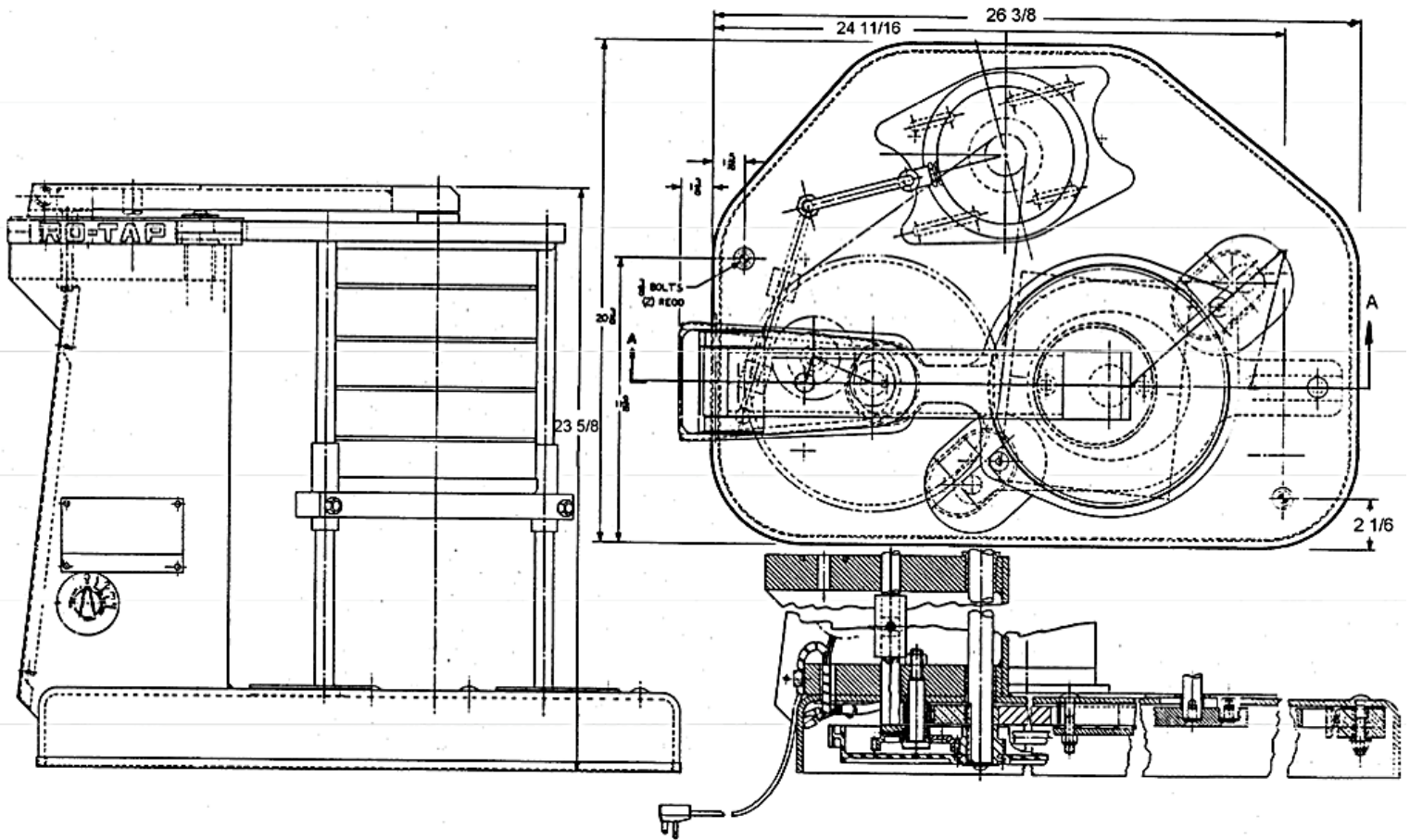
Product Description:

The RO-TAP is recommended for testing in applications requiring analysis for particles 635 mesh or coarser. The standard unit is designed to take 8" diameter sieves. Adaptors are available to test with 3", 4", 5", 6", 10" and 12" diameter screens. Regardless of diameter, any one material sample can be tested on a series of 7 full height (2") or 15 half height (1") sieves at one time, plus bottom pan and top cover.

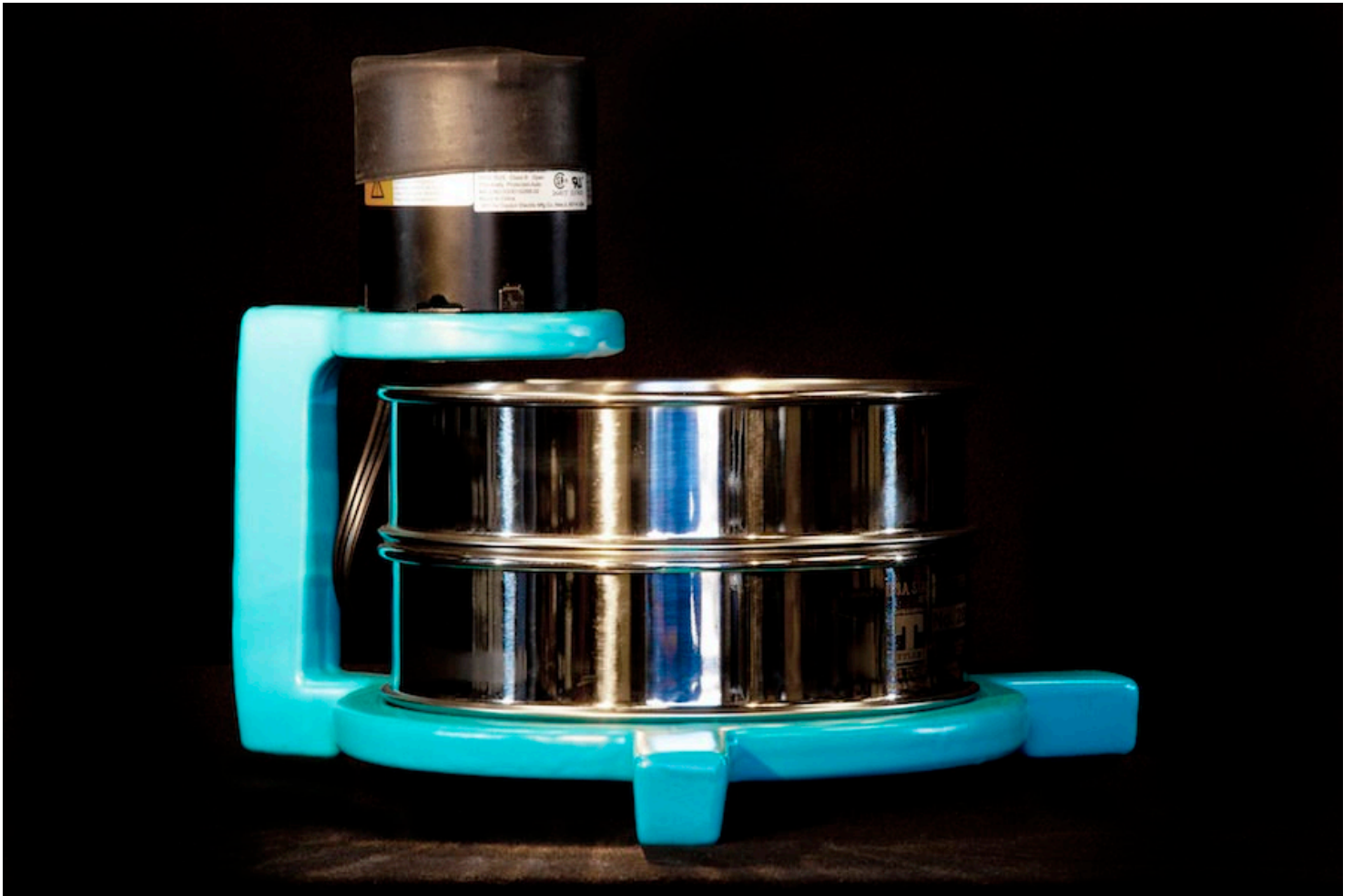
The RO-TAP is operated by an enclosed, vertically mounted 1/4 HP electric motor. The standard unit is wired for use with single phase current, 60 cycle, 100 volts. In addition, the RO-TAP can be wired for 50 cycle current and or 220 volts. Each unit is supplied complete with its own built in 30 minute timer and an operation, maintenance and parts manual.

The RO-TAP is 28 inches wide, 21 inches deep and 25 inches high. The machine weighs 180 pounds. A dust/sound enclosure and a wet sieving kit for 8 inch diameter sieves is also available for the RO-TAP.

| Catalog Number | Description | Ship Volume | Ship Weight |
|----------------|--|--------------------|-------------|
| 040B-010 | Rotap, Mdl. B, 8" Dia Sieves, 110 V/1 Ph/60 Hz | 13 Ft ³ | 210 Lbs. |
| 040B-011 | Rotap, Mdl. B, 8" Dia. Sieves, 220 V/1 Ph/50 Hz | 13 Ft ³ | 210 Lbs. |
| 040B-012 | Rotap, Mdl. B, 12" Dia. Sieves, 110 V/1 Ph/60 Hz | 13 Ft ³ | 210 Lbs. |
| 040B-013 | Rotap, Mdl. B, 12" Dia. Sieves, 220 V/1 Ph/50 Hz | 13 Ft ³ | 210 Lbs. |
| 040B-015 | Wet Sieve Kit, 8" Dia. Sieves | 1 Ft ³ | 40 Lbs. |
| 040B-016 | Sound Enclosure For Ro-Tap | 16 Ft ³ | 100 Lbs. |



Sepor Wet Dry Sieve Shaker



Description:

The Wet-Dry Sieve Shaker is supplied for the purpose of conducting relatively simple size analysis for materials. The sieve shaker uses standard 8 inch diameter laboratory sieve screens and has a capacity for 2 full height 8" diameter sieve screens.

| Catalog Number | Description |
|----------------|--|
| 040B-001 | 8 inch Wet Dry Sieve Shaker, 110v/60hz |
| 040B-024 | 12 inch Wet Dry Sieve Shaker, |
| 040B-002 | Electrical kit to operate on 220 V/1 Ph |
| 040B-003 | Additional neoprene motor cap |
| 040B-007 | 5 Gallon Notched Plastic Bucket for 8 inch Sieve Shaker |
| 040B-210 | 6 ½ Gallon Notch Plastic Bucket for 12 inch Sieve Shaker |